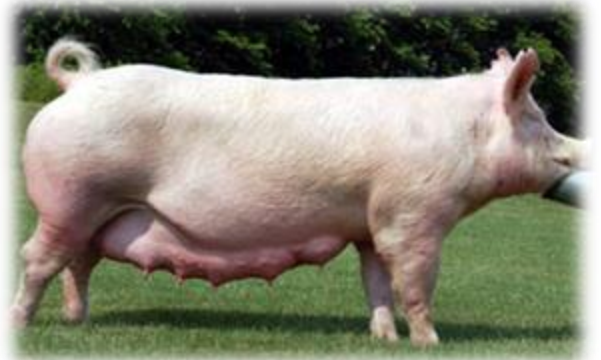


Mare



Sow



Hen



Hen



Cow



Ewe



A female pig is called a sow. A sow is pregnant for 3 months, 3 weeks, and 3 days before she gives birth to her piglets.

A female horse is called a mare. A mare is pregnant for about 11 months before she gives birth to a foal.

A female chicken is called a hen. A hen lays eggs. The eggs are hatched 21 days after they are laid. A newly hatched chicken is called a chick.

A female turkey is called a hen. A hen lays eggs. The eggs are hatched 28 days after they are laid. A newly hatched turkey is called a poult.

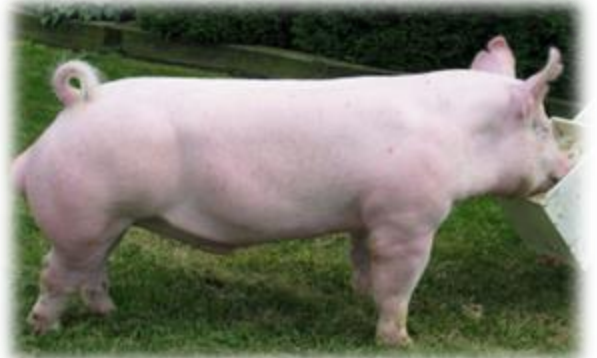
A female sheep is called a ewe. A ewe is pregnant for about 5 months before she gives birth to 1-3 lambs.

Female cattle are called cows. A cow is pregnant for about 9 months before she gives birth to a calf.

Stallion



Boar



Tom



Rooster



Bull



Ram



A male pig is called a boar.

Pigs eat a grain mixture of ground corn and soybean meal.

A male horse is called a stallion.

Horses eat hay, grass, and grain.

A male chicken is called a rooster.

Chickens eat a grain mixture of soybeans and corn.

A male turkey is called a tom.

Turkeys eat a grain mixture of soybeans and corn.

A male sheep is called a ram.

Sheep eat grass, hay, and grains such as corn and oats.

Male cattle are called bulls.

Cattle eat grass, hay, and grains such as corn or ground soybeans.

Foal



Piglet



Poult



Chick



Calf



Lamb



A newborn pig is called a piglet. They weigh about 3 pounds when they are born. Piglets are born in a litter of 8-12 other baby pigs.

A newborn horse is called a foal. A female foal is called a filly. A male foal is called a colt.

A newly hatched chicken is called a chick. Each chick uses its beak to break out of its eggshell.

A newly hatched turkey is called a poult. Turkey farmers provide shelter for poults to protect them from predators and the weather.

A newborn sheep is called a lamb. A female sheep can have a single lamb, twins, or triplets.

Baby cattle are called calves. A calf can weigh between 75 and 100 pounds when it is born.